

Bicolor level gauge type BU green-red

glass-mica pressure relieved, lateral connection,
expansion loop

Application and function

The bicolor level gauge is a direct water level gauge which can be used for steam generators.

In the sight opening, the water space is indicated in green and the steam space in red. The product corresponds to the PED directive 97/23/EEC art. 3 par. 3 SEP (Sound Engineering Practice).

Applied rules are TRD/AD2000 or ASME-Boilers.

Technical basic equipment

- Body material carbon steel according to ASME
- As left sided (mapped) or right sided model
- Sight length see table
- With drain valve and ventilation plug
- Illumination device LED Duo SOL6/8, IP67
- Shutoff valves type A220 and A240
- Drain valve type AV500, AV 520

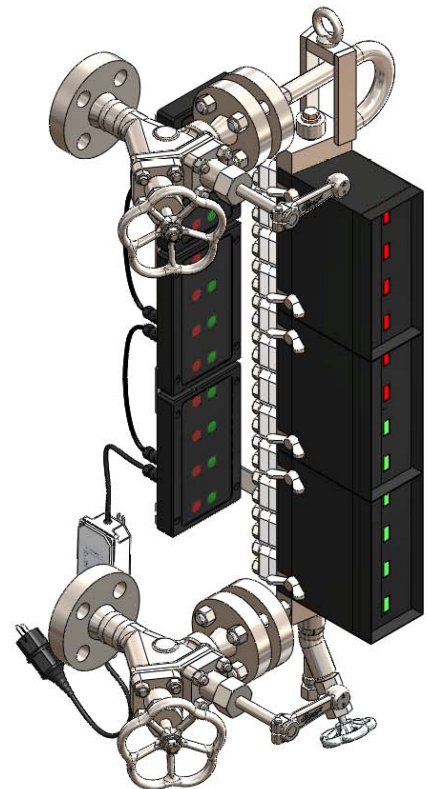
Available (optional) versions

- Other drain valve

Technical data

| | | | | | | | |
|-----------------------|------------|----------------|-------|-----|----------------|-----|-----|
| Allowable pressure | PS [bar] | 32 | 50 | 80 | 100 | 160 | 200 |
| Allowable temperature | TS [° C] | 239 | 265 | 296 | 312 | 348 | 367 |
| Shutoff valve | Type | A220 | | | A240 | | |
| | Datasheet | D-09-D-16356-0 | | | D-09-D-16357-0 | | |
| Drain valve | Type | AV500 | AV520 | | | | |
| | Data sheet | D-09-D-16358-0 | | | | | |

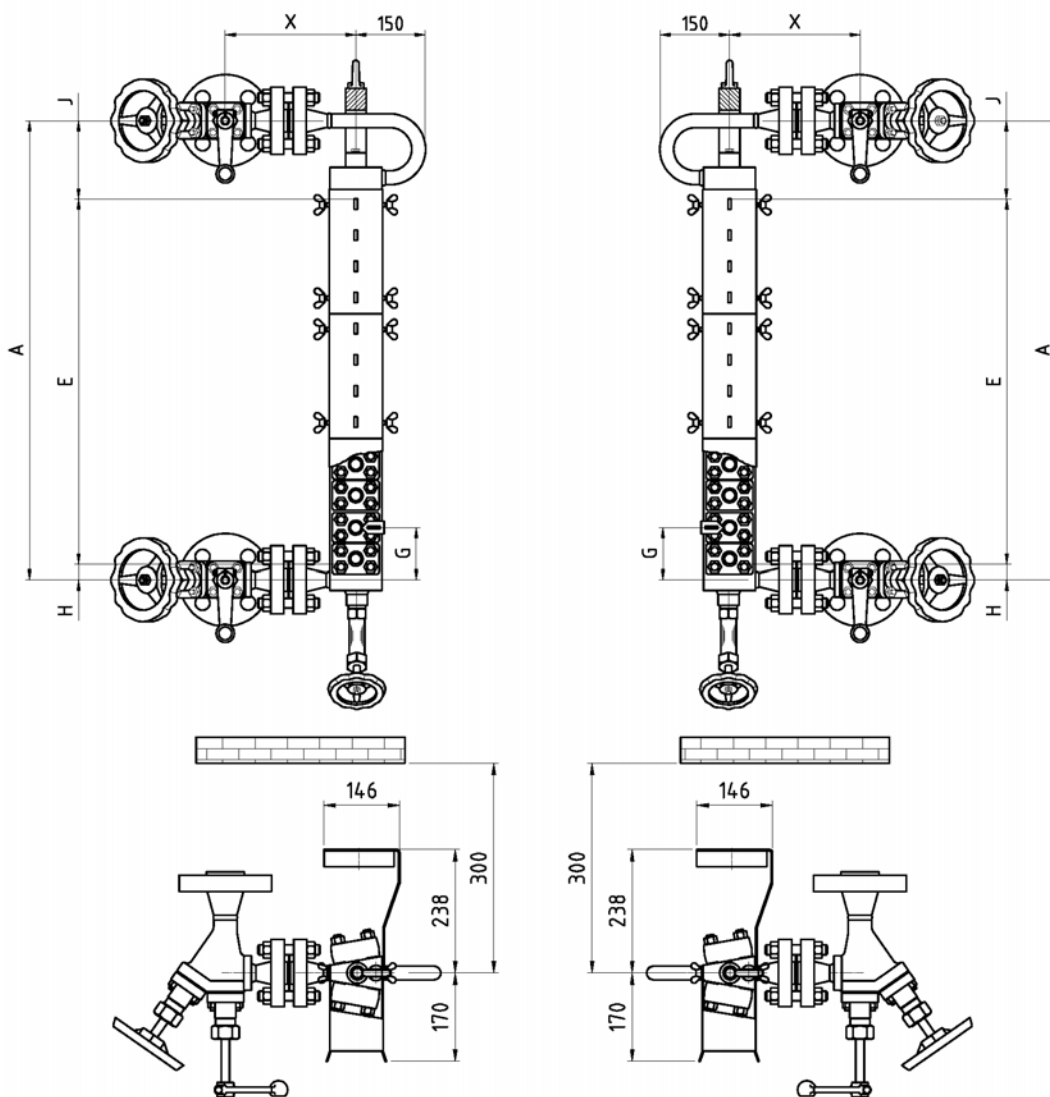
| | | |
|--------------|------------|----------------|
| Illumination | Protection | IP67 |
| | Data sheet | D-A1-D-16358-0 |



Dimensions and tables

Left sided model

Right sided model

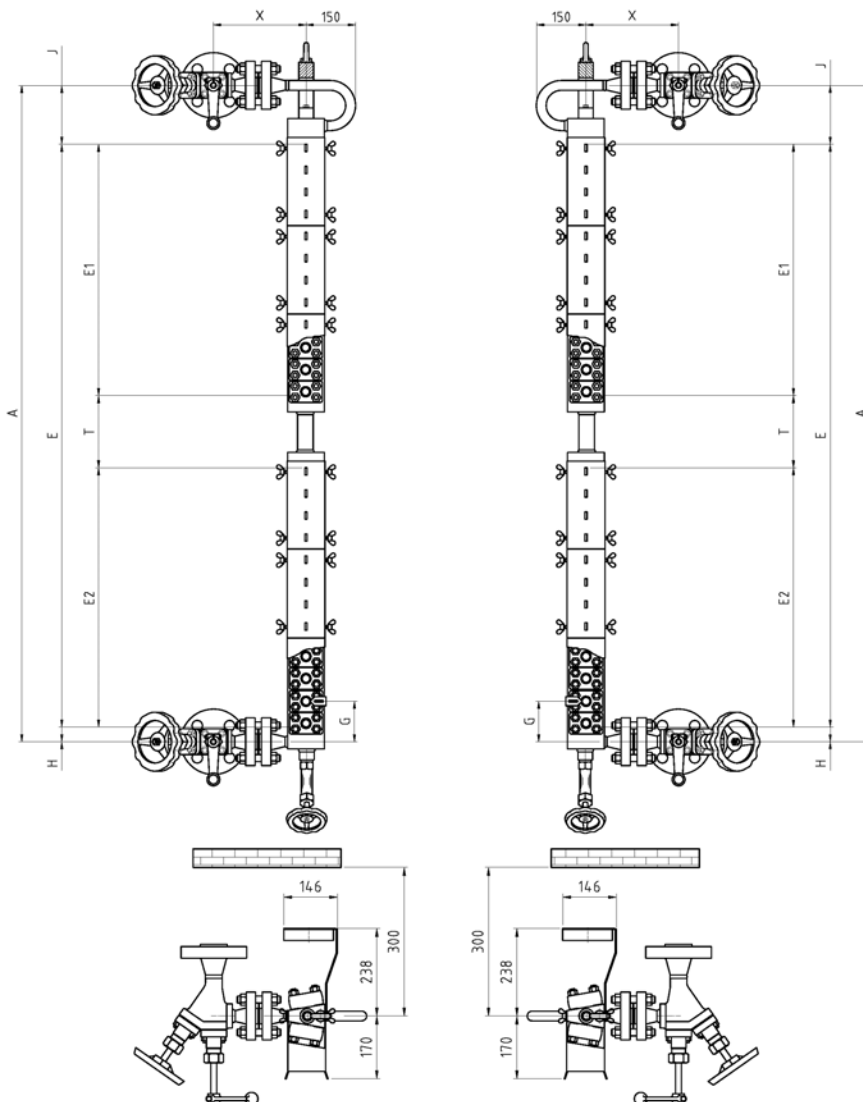


Dimensions and tables

Divided version

Left sided model

Right sided model



If sight length $E > 800$ mm one porthole is left out and a dead space (T) of 100 mm arises.
The position of the dead space depends on the order



Dimensions and tables

| | | | | | | | | | | | | |
|--------------|------------------------|------|------------|-----|-----|-----|-----|-----|-----|-----|-----|-----|
| Size | | | 5 | 6 | 7 | 8 | 9 | 10 | 11 | 12 | 13 | 14 |
| Sight length | E | | 260 | 320 | 380 | 440 | 500 | 560 | 620 | 680 | 720 | 800 |
| Dimension | Maß H/J _{min} | [mm] | 40 | | | | | | | | | |
| | Maß H/J _{max} | [mm] | On request | | | | | | | | | |

Calculation of sight length: $E = (n-1) \times 60 + 20$



Information:

Depending on the size and version of the level gauge the customer has to arrange a sufficient brace support (eg. spring suspension etc.).

| Allowable pressure PS [bar] | Valve | Flange | L [mm] | Welding end | L [mm] | X [mm] |
|--------------------------------|-------|--------|--------|-------------|--------|--------|
| 32 | A220 | DN20 | 170 | DN20 | | 240 |
| 50 | A150 | DN25 | 129 | DN25 | | 240 |
| 80 | A150 | DN 25 | 129 | DN25 | | 260 |
| 80 | A220 | DN25 | 160 | DN25 | 160 | 260 |
| 100 | A240 | DN25 | 145 | DN25 | 150 | 270 |
| 160 | A240 | DN25 | 155 | DN25 | 150 | 330 |
| 200 | A240 | DN25 | 170 | DN25 | 150 | 330 |

