

Glass Tube Liquid Level Gauge PN 25

Type 700.03

Applications

Direct reading liquid level indicator with glass tube for general applications up to CL 150. Increased safety with ball check-valves and glass protection.

Special Features

- Connection top - bottom pivoted
- Offset, quick closing
- Glass protection

General Data

Visible length SL	ME – 130 mm
	from 1500 mm and up every
	1000 mm glass-holder in-between
Process connection	union, flange
Gauge valve types	s. data sheet 760.03
Actuation	quick closing
Material glass tube	Borosilicate
Material media wetted parts	CS, SS
Material glass protection device	Acrylic glass / SS
Material sealing glass tube	Viton
Types with special materials e.g. Hastelloy, Monel etc. are available.	
Weight	
- basic weight for ME ≤ 1500 mm	3,6 kg
- basic weight for ME > 1500 mm	4,9 kg
- + weight / m	0,2 kg
- weight glass protection device / m	0,2 kg

Design Data

Design pressure /temperature – 20...+ 200°C / 0...25 bar

Further Data

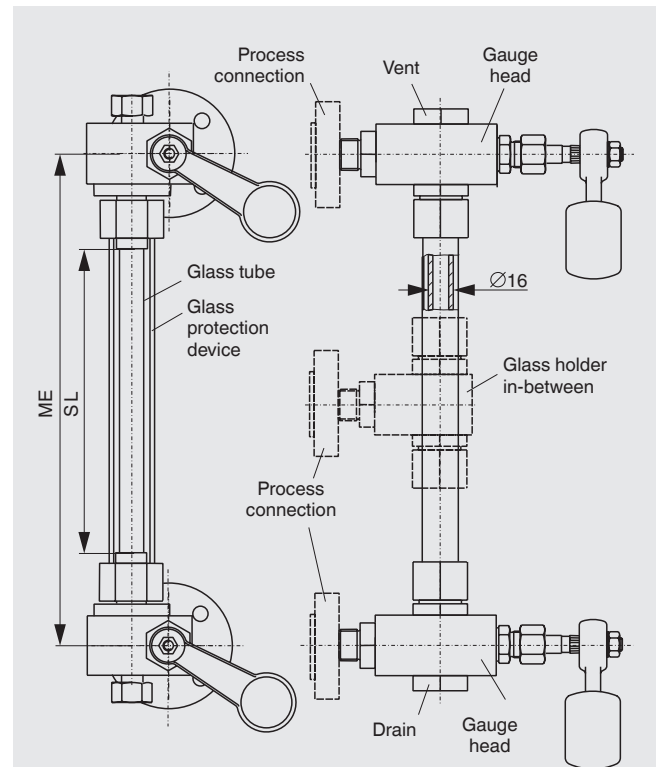
Process connection	see Connections
Vent	see Connections
Drain	see Connections

Accessories

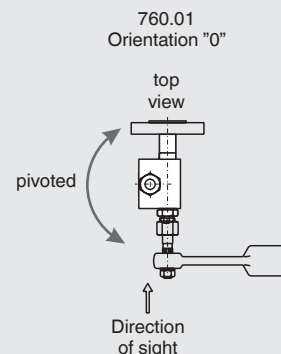
Scale see Accessories

Spare parts

Glasstube length = ME – 40



Orientation of gauge valve and operation



CS (= carbonsteel) and SS (= stainless steel type 316SS) are materials suitable for Pressure Vessels according to EN or ASME.