

# Hydraulic Clamp Nut

## Fixed connection - type square



Series 052 / 152

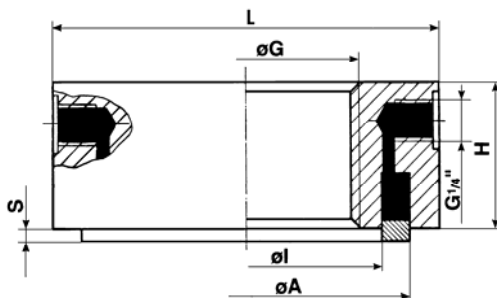
### Features of series

**Radial connection  
with pumpstand**

**Medium remains into  
the pumpstand**



The pressure is based by the fixed connection of an external pumpstand.  
The internal medium will flow into the circular groove and raise the ring piston.  
Pressure rate is shown precisely at the pump stand pressure gauge.  
Relieving the system is based on the pumpstand function.  
After relieve you have to press the nut to the opposite direction .  
The Medium flows back to the pumpstand.



**Clamping range**  
**2 mm**  
**4 mm**  
**10 mm**

Thread $\varnothing G_{max.}$	Ring piston		Outer Dimension L x B	Height H	Clamping Force in kN Pump with max.working pressure		Part No Clamping range S
	$\varnothing A$	$\varnothing I$			400 bar	700 bar	
							<b>2 mm</b>
30	65	40	80 x 80	45	80	140	<b>052.02.030</b>
							<b>4 mm</b>
36	66	46	80 x 80	50	70	120	<b>052.04.036</b>
							<b>10 mm</b>
36	66	46	90 x 90	60	70	120	<b>152.10.036</b>

Against corrosion our hydraulic clamp nuts are protected with a brown finish.  
The standard sealing systems are suitable for temperatures up to 80°.  
The ring piston is locked against drop out.

Special design of hydraulic clamp nuts on request



AVEMAR CZECH s.r.o. | speciální armatury pro měření a regulaci  
Branch office | Lihovarská 1199/10 | 716 03 Ostrava - Radvanice | Česká republika  
Tel.: +420 596 232 996 (7) | Fax: +420 596 232 998 | www.avemar.cz | avemar@avemar.cz